



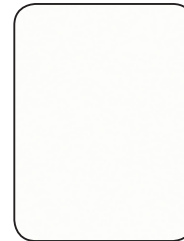
Laminex®
Inspire your space

Laminex® Chemical Resistant Surfaces

Laminex® Chemical Resistant surfaces are designed to provide advanced protection against damaging chemicals in any number of harsh environments. Economical, durable, stylish and easy to maintain, the innovative laminate construction is intended for interior horizontal and vertical applications. These surfaces feature chemical resistance to acids, alkalis, corrosive salt, and other destructive or staining substances. Suitable horizontal surfaces include sinks, counters, laboratory benches and tabletops. Ideal vertical surfaces include cabinets, casework fronts, wall splashback panels or screens. Another durable feature of Laminex Chemical Resistant surfaces is the 7 year limited warranty. For technical data, please refer to the Technical Data Sheet at laminex.co.nz.

Advanced Chemical Resistance • 5 Stylish Colours • Horizontal or Vertical

COLOUR RANGE



White



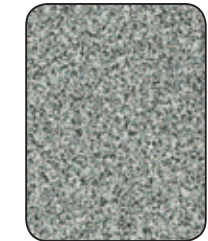
Parchment



Oyster Grey



Zincworks



Diamond

RECOMMENDED APPLICATIONS

SHEET SIZE	3600mm x 1500mm
THICKNESS	0.7mm nominal
POSTFORMABILITY	15mm (machine direction only)
APPLICATIONS	School and university laboratories, photographic laboratories, chemical laboratories, mortuaries, scientific laboratories, nursing stations, pathogenic laboratories, dental laboratories, clinics, hairdressing salons, etc.